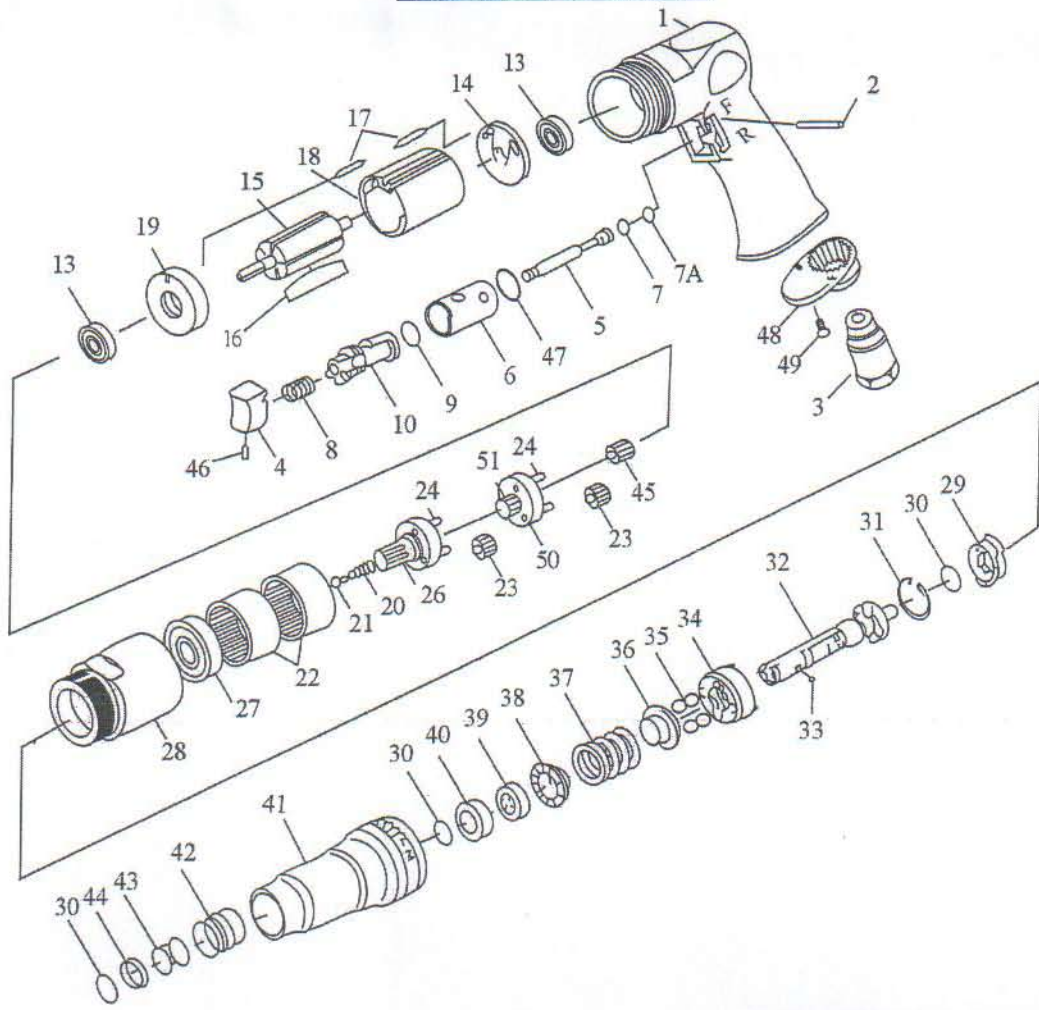


DIAGRAM OF SD6-1



| ITEM NO. | PART NO. | DESCRIPTION | Qty | ITEM NO. | PART NO. | DESCRIPTION | QTY | ITEM NO. | PART NO. | DESCRIPTION | QTY |
|----------|----------|------------------------------------|-----|----------|----------|------------------------------------|-----|----------|----------|-------------------|-----|
| 1 | 351-0523 | HOUSING | 1 | 22 | 351-0543 | INTERNAL GEAR | 2 | 43 | 351-0563 | SPRING | 1 |
| 2 | 351-0524 | PIN($\varnothing 2.5 \times 22$) | 1 | 23 | 351-0544 | PLANET GEAR | 6 | 44 | 351-0564 | WASHER | 1 |
| 3 | 351-0525 | AIR INLET | 1 | 24 | 351-0545 | PIN($\varnothing 4 \times 13.8$) | 1 | 45 | 351-0565 | PINION GEAR | 1 |
| 4 | 351-0526 | TRIGGER | 1 | 26 | 351-0546 | WORK SPINDLE | 1 | 46 | 351-0566 | SET SCREW(M4X6) | 1 |
| 5 | 351-0527 | VALVE STEM | 1 | 27 | 351-0547 | BALL BEARING(6201zz) | 1 | 47 | 351-0567 | O-RING(P14) | 1 |
| 6 | 351-0528 | REVERSE BUSHING | 1 | 28 | 351-0548 | CLAMP NUT | 1 | 48 | 351-0568 | EXHAUST DIFFUSER | 1 |
| 7 | 351-0529 | O-RING | 1 | 29 | 351-0549 | DRIVE DOG | 1 | 49 | 351-0569 | SCREW(M3X8) | 2 |
| 7A | 351-0530 | O-RING(3.9x2.25x2) | 1 | 30 | 351-0550 | RETAINING RING | 3 | 50 | 351-0570 | REDUCTION SPINDLE | 1 |
| 8 | 351-0531 | VALVE SPRING | 1 | 31 | 351-0551 | RETAINING RING | 1 | 51 | 351-0571 | CENTER GEAR | 1 |
| 9 | 351-0532 | O-RING(P9) | 1 | 32 | 351-0552 | CAM SPINDLE | 1 | | | | |
| 10 | 351-0533 | REVERSE LEVER | 1 | 33 | 351-0553 | STEEL BALL | 1 | | | | |
| 13 | 351-0534 | BALL BEARING(626zz) | 2 | 34 | 351-0554 | CLUTCH CARRIER | 1 | | | | |
| 14 | 351-0535 | REAR END PLATE | 1 | 35 | 351-0555 | STEEL BALL | 4 | | | | |
| 15 | 351-0536 | ROTOR | 1 | 36 | 351-0556 | WASHER | 1 | | | | |
| 16 | 351-0537 | ROTOR BLADE | 5 | 37 | 351-0557 | SPRING | 1 | | | | |
| 17 | 351-0538 | PIN($\varnothing 2.5 \times 10$) | 2 | 38 | 351-0558 | WASHER | 1 | | | | |
| 18 | 351-0539 | CYLINDER | 1 | 39 | 351-0559 | ADJUST NUT | 1 | | | | |
| 19 | 351-0540 | FRONT END PLATE | 1 | 40 | 351-0560 | SPACER | 1 | | | | |
| 20 | 351-0541 | SPRING | 1 | 41 | 351-0561 | CLUTCH HOUSING | 1 | | | | |
| 21 | 351-0542 | SPRING GUIDE | 1 | 42 | 351-0562 | BALL RETAINER | 1 | | | | |