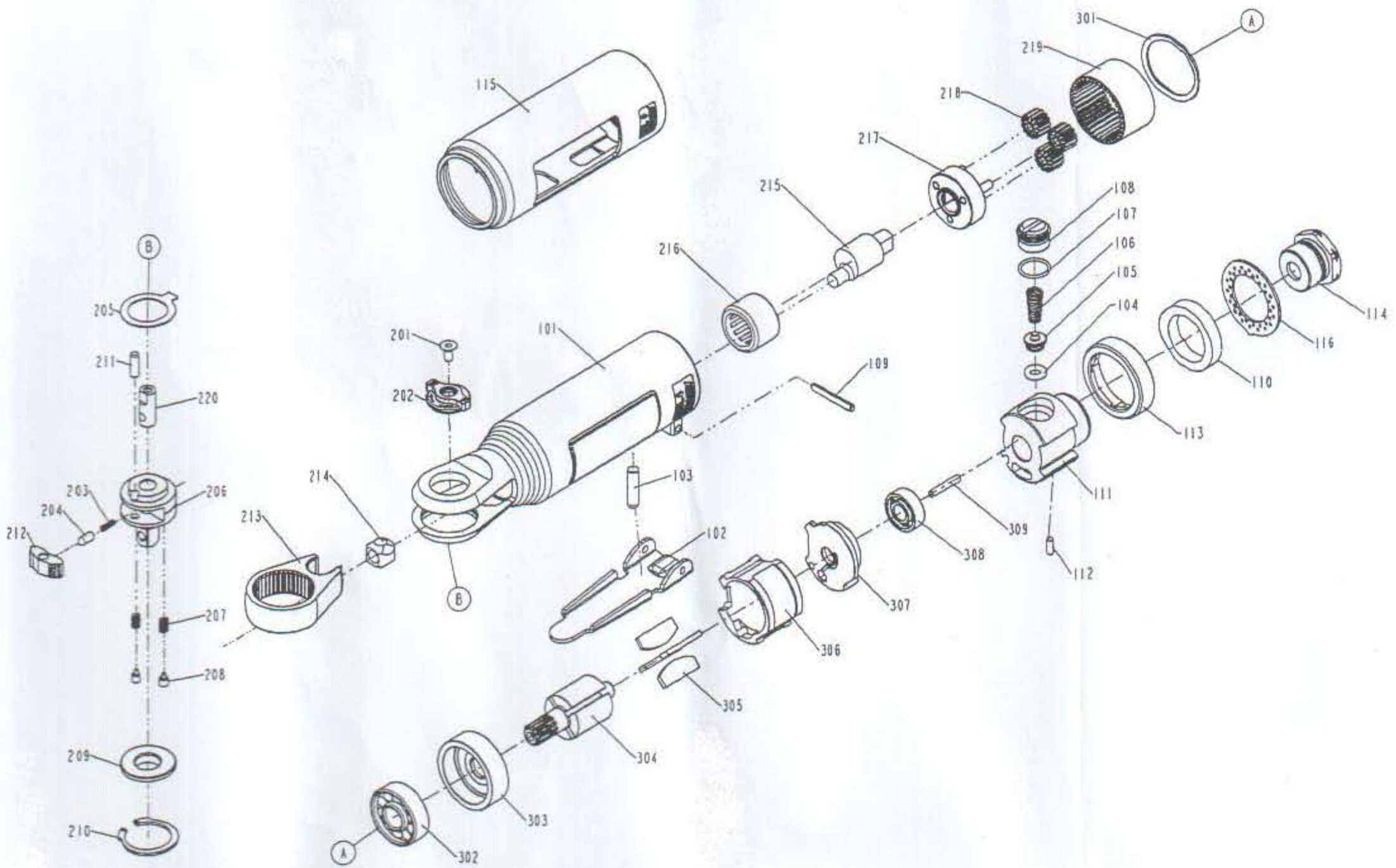


DIAGRAM OF RW-2M



ITEM NO.	PART NO.	DESCRIPTION	ITEM NO.	PART NO.	DESCRIPTION	ITEM NO.	PART NO.	DESCRIPTION
101	12302-1020005-1	HOUSING	218	1231B-1020001-1	PLANET GEAR			
102	12310-1020003-1	TRIGGER	219	1231A-1020001-1	INTERNAL GEAR			
103	12305-1020004-1	VALVE STEM	220	1231H-1024704-1	REVERSE LEVER B			
104	2041105-01020-0	O - RING	301	12340-1024702-1	SPRING-WASHER			
105	12385-1024701-1	DISCHARGE SHEET	302	2041200-00020-0	BEARING			
106	1230J-1020004-1	DISCHARGE SHEET SPRING	303	12312-1020002-1	FRONT BEARING PLATE			
107	2041109-01090-0	O - RING	304	12313-1020002-1	ROTOR			
108	12397-1024701-1	DISCHARGE VALVE SEAL	305	12314-1020002-1	BLADES			
109	2040400-04100-0	SPRING PIN	306	12315-1020001-1	CYLINDER			
110	12351-1024701-1	MUFFLER	307	12316-1020002-1	REAR END PLATE			
111	1232E-1020001-1	VALVE UNIT	308	2041200-00170-0	BEARING			
112	2040403-04030-0	PIN	309	2040400-04070-0	SPRING PIN			
113	12341-1024702-1	PACKING						
114	12309-1024705-1	AIR INLET						
115	1230N-1024704-1	HANDLE GRIP						
116	12346-1024701-1	DEFLECTOR						
201	2040103-01030-0	COUNTER SUNK SCREW						
202	1231H-1024703-1	REVERSE LEVER A						
203	1230J-1020001-1	REVERSE SPRING						
204	1230B-1024701-1	REVERSE PIN						
205	1230S-1024702-1	YOKE-WASHER						
206	12240-1024701-1	ANVIL ASSEMBLY						
207	1230J-1020003-1	THRUST WASHER SPRING						
208	12305-1020003-1	PIN						
209	12340-1024701-1	ANVIL-WASHER						
210	2040303-33010-0	IN-CONCENTRIC RING						
211	1230B-1020001-1	PLANET PIN						
212	1231G-1020001-1	RATCHET PAWL						
213	1231E-1024702-1	YOKE						
214	1231D-1024701-1	DRIVE BUSHING						
215	12322-1020001-1	MOTER SHAFT BALANCER						
216	2041202-00010-0	NEEDLE BEARING						
217	1231C-1020002-1	PLANET CAGE						