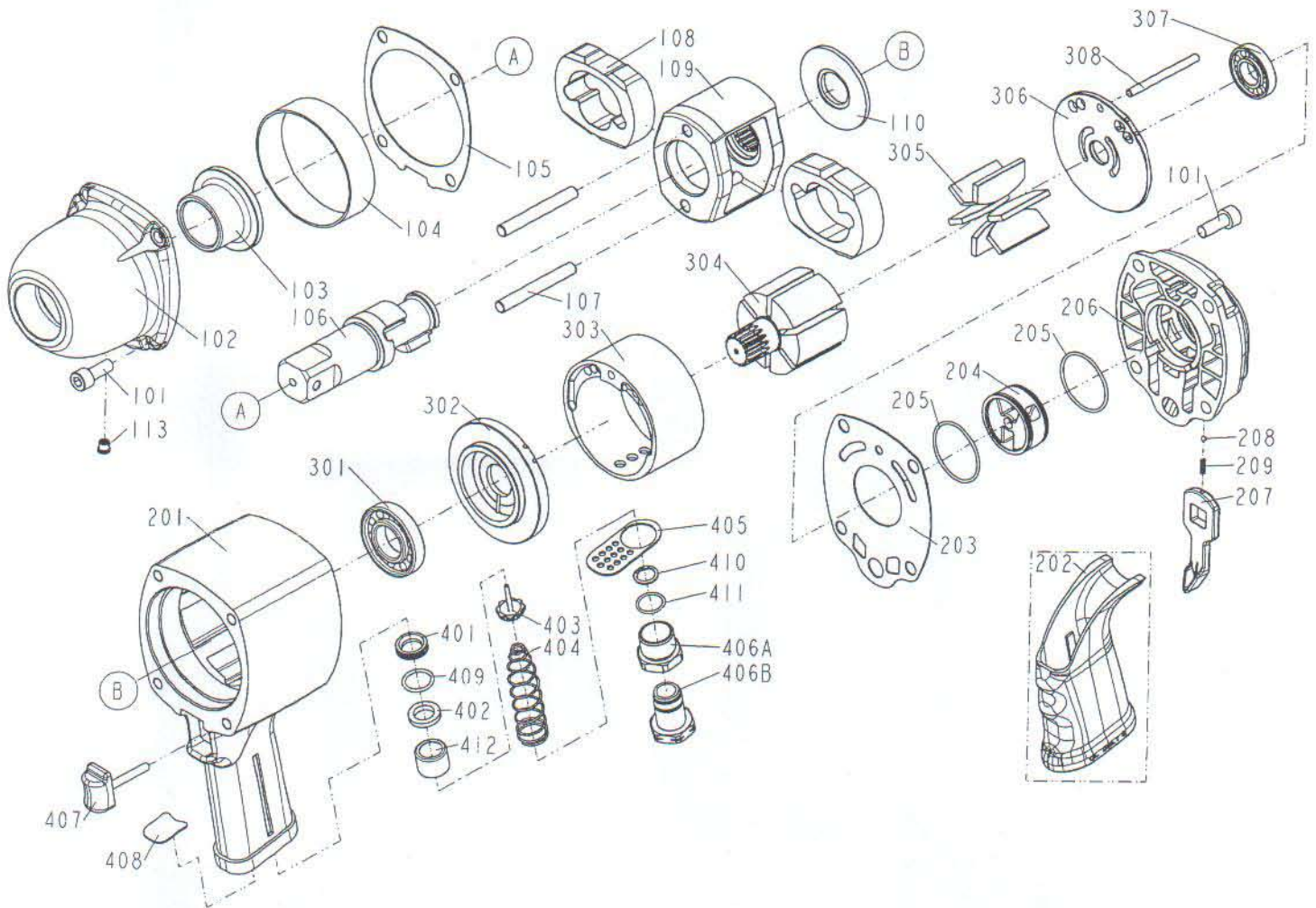


DIAGRAM OF IW-5M1



| ITEM NO. | PART NO. | DESCRIPTION | ITEM NO. | PART NO. | DESCRIPTION | ITEM NO. | PART NO. | DESCRIPTION |
|----------|-----------------|----------------------------|----------|-----------------|--------------------|----------|----------|-------------|
| 101 | 2040100-05030-2 | BOLT ASSY | 402 | 12319-0080001-1 | SEAL | | | |
| 102 | 12318-0084702-1 | HAMMER CASE | 403 | 12226-0080001-1 | TIP VALVE | | | |
| 103 | 1230K-0080002-1 | HAMMER CASE BUSHING | 404 | 12308-0080001-1 | SPRING | | | |
| 104 | 12378-0084701-1 | COLLAR | 405 | 12346-0084701-1 | EXHAUST DEFLECTOR | | | |
| 105 | 1230S-0080002-1 | HAMMER CASE GASKET | 406A | 12309-0084705-1 | AIR INLET | | | |
| 106 | 1230D-0090001-1 | ANVIL | 406B | 12309-0084706-1 | AIR INLET | | | |
| 107 | 1230B-0080001-1 | HAMMER FRAME PIN | 407 | 12225-0084701-1 | TRIGGER UNIT | | | |
| 108 | 1230C-0080001-2 | HAMMER | 408 | 12351-0080001-1 | MUFFLER | | | |
| 109 | 1230E-0080001-1 | HAMMER FRAME | 409 | 2041105-02070-0 | O - RING | | | |
| 110 | 12340-0084702-1 | WASHER | 410 | 2040304-46010-0 | EX-CONCENTRIC RING | | | |
| 113 | 2042400-00010-0 | HAMMER CASE GREASE FITTING | 411 | 2041102-02080-0 | O - RING | | | |
| 114 | 1231R-0084701-1 | FIXED RING | 412 | 1230K-0080006-1 | BUSHING | | | |
| 115 | 1231N-0084701-1 | HANDLE | | | | | | |
| 116 | 2040201-04010-0 | FLAT WASHER | | | | | | |
| 117 | 2040101-04030-0 | HEX.SOC.HD.BOLT | | | | | | |
| 201 | 12302-0089701-1 | HOUSING | | | | | | |
| 202 | 1230N-0084707-1 | HANDLE GRIP | | | | | | |
| 203 | 1230S-0080001-1 | HOUSING GASKET | | | | | | |
| 204 | 1230L-0080001-1 | REVERSE VALVE | | | | | | |
| 205 | 2041104-04090-0 | O - RING | | | | | | |
| 206 | 12223-0084704-1 | REAR COVER UNIT | | | | | | |
| 207 | 1230M-0081101-1 | LEVER | | | | | | |
| 208 | 2040800-01010-0 | STEEL BALL | | | | | | |
| 209 | 1230J-0080001-1 | SPRING | | | | | | |
| 301 | 2041200-00150-0 | BEARING | | | | | | |
| 302 | 12312-0080001-1 | FRONT BEARING PLATE | | | | | | |
| 303 | 12315-0080001-1 | CYLINDER | | | | | | |
| 304 | 12313-0080001-1 | ROTOR | | | | | | |
| 305 | 12314-0080001-1 | BLADES | | | | | | |
| 306 | 12316-0080002-1 | REAR END PLATE | | | | | | |
| 307 | 2041200-00160-0 | BEARING | | | | | | |
| 308 | 1230B-0080201-1 | PIN | | | | | | |
| 401 | 1230K-0080001-1 | INSERT BUSHING | | | | | | |