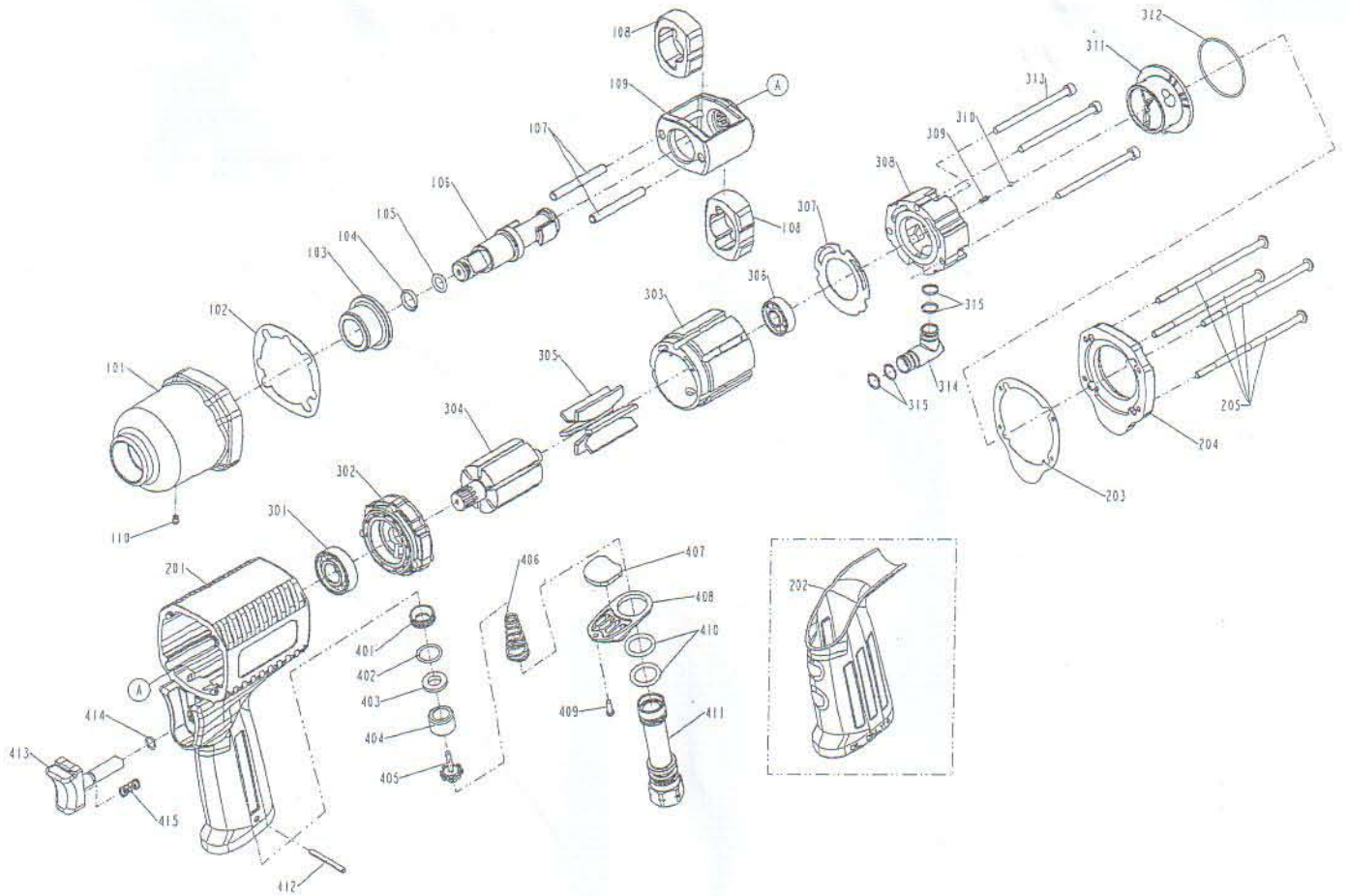


DIAGRAM OF IW-3C5



ITEM NO.	PART NO.	DESCRIPTION	ITEM NO.	PART NO.	DESCRIPTION	ITEM NO.	PART NO.	DESCRIPTION
101	12318-013A102-1	HAMMER CASE	404	1230K-0070007-1	BUSHING			
102	1230S-0134701-1	HAMMER CASE GASKET	405	12226-0074701-1	TIP VALVE			
103	1230K-0133002-1	HAMMER CASE BUSHING	406	12308-0130001-1	SPRING			
104	2040306-00010-0-0	SOCKET RETAINER	407	12351-0070002-1	MUFFLER			
105	2041100-01070-0	O - RING	408	12346-0074703-1	EXHAUST DEFLECTOR			
106	1230D-0070008-1	ANVIL	409	2040107-01020-0	TAP BOLT			
107	1230B-0130002-1	HAMMER FRAME PIN	410	2041109-02130-0	O - RING			
108	1230C-0130002-1	HAMMER	411	12309-0074705-1	AIR INLET			
109	1230E-0130002-1	HAMMER FRAME	412	2040400-05150-0	SPRING PIN			
110	2042400-00040-0	HAMMER CASE GREASE FITTING	413	12310-0074701-3	TRIGGER			
201	12302-0132404-1	HOUSING	414	2041109-01060-0	O - RING			
202	1230N-0134701-1	HANDLE GRIP	415	11337-0394702-1	SAFETY SPRING			
203	1230S-0064702-1	REAR COVER GASKET						
204	12394-0064705-1	REAR COVER						
205	2040114-02051-2	HALF ROUND HD. STAR HEAD BOLT						
301	2041200-00087-0	BEARING						
302	12312-0130001-1	FRONT BEARING PLATE						
303	12315-0130001-1	CYLINDER						
304	12313-0130001-1	ROTOR						
305	12314-0130002-1	BLADES						
306	2041200-00020-0	BEARING						
307	1230S-0130002-1	REGULATOR BASE GASKET						
308	12239-0130001-1	REGULATOR BASE						
309	1230J-0060002-1	SPRING						
310	2040800-05020-0	BALL						
311	1230L-0133802-1	REVERSE VALVE						
312	2041109-04050-0	O - RING						
313	2040101-02051-2	HEX.SOC.HD.BOLT						
314	12383-0130001-1	INLET						
315	2041109-01030-0	O - RING						
401	1230K-0070001-1	INSERT BUSHING						
402	2041102-02020-0	O - RING						
403	12319-0070001-2	SEAL						