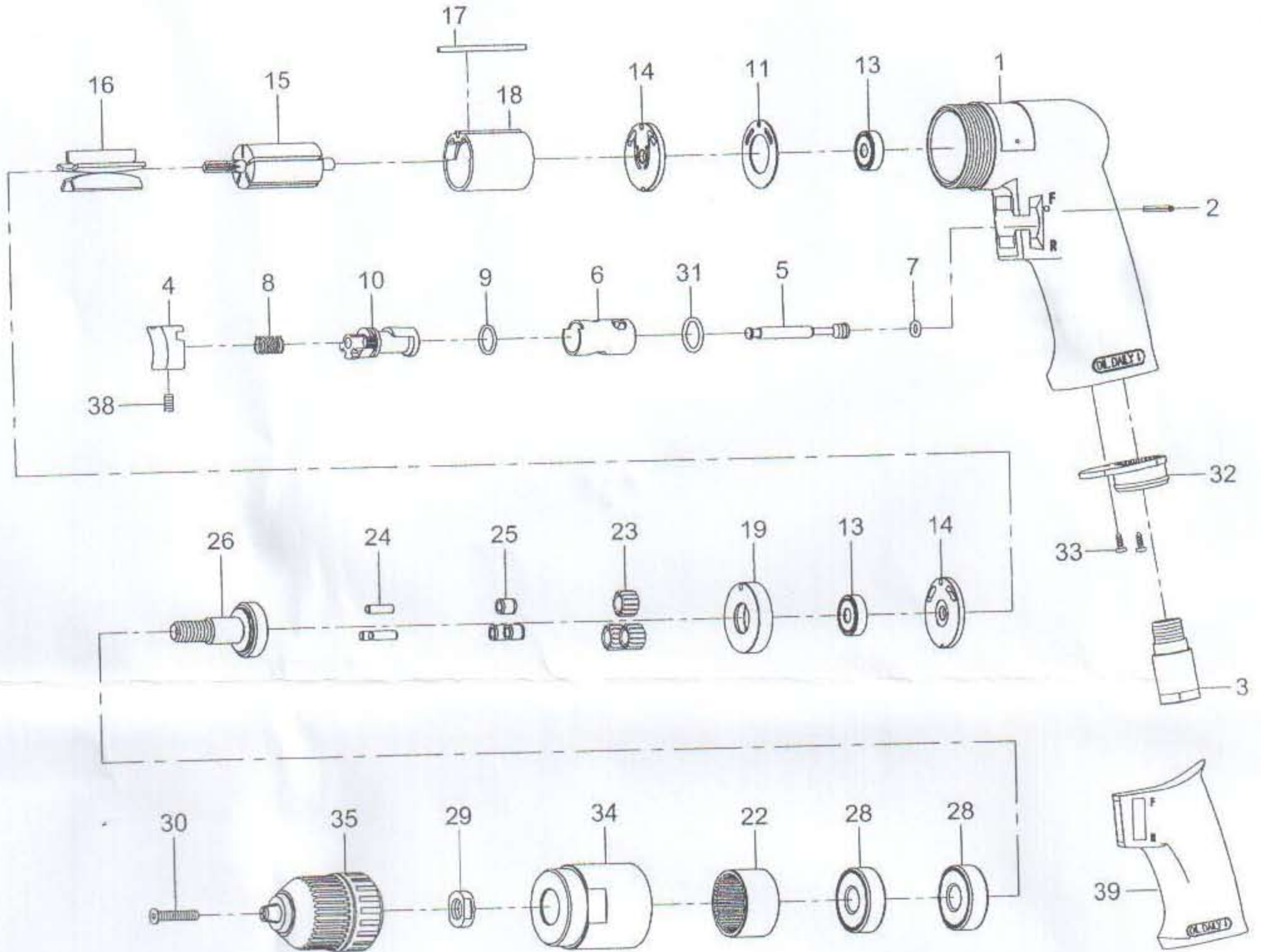


3/8" REVERSIBLE AIR DRILL



Index No.	Parts No.	Description	Index No.	Parts No.	Description
1	81301	Motor Housing	19	80219	Spacer
2	80202	Spring Pin (Ø2.5*24L)	22	80222	Internal Gear
3	70103	Air Inlet	23	80223	Planet Gear (3)
4	70104	Trigger	24	30124	Pin (3) (Ø4*13.8L)
5	80205	Valve Stem	25	80225	Bushing (3)
6	80206	Reverse Bushing	26	70526	Work Spindle
7	70107	O-Ring (Ø4.8*Ø1.9)	28	080227	Ball Bearing (2) (6201Z)
8	70108	Valve Spring	29	72529	Chuck Spacer
9	80209	O-Ring (Ø12*Ø1.5)	30	70530	Screw (M5*25L)
10	80210	Reverse Lever	31	80247	O-Ring (Ø13.8*Ø2)
11	80211	Motor Gasket	32	70110	Exhaust Diffuser
13	030113	Ball Bearing (2) (626ZZ)	33	40309	Screw (2) (TS2.9)
14	80214	End Plate (2)	34	70534	Clamp Nut
15	80215	Rotor	35	10035-16	Keyless Chuck (3/8")
16	80216	Rotor Blades (5)	38	70935	Set Screw (M4*8L)
17	80217-13	Spring Pin (Ø2.5*55L)	39	81352	Ruber Grip
18	80218-22	Cylinder			